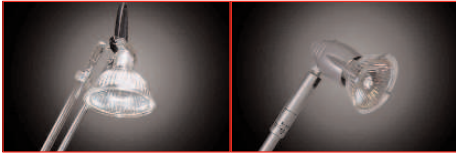


Pop-up Lighting



Powerspot 250

Powerspot 500



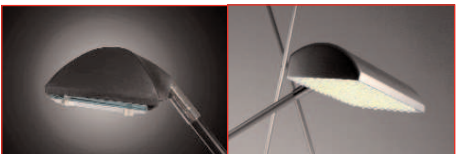
Powerspot 600

Powerspot 750



Powerspot 900

Powerspot 950



Powerspot 1000

LED Flood Light

A range of pop-up lighting options to fit any environment, from subtle low voltage spotlights to high impact mains halogen and fluorescent.



Powerspot 1200

Features & benefits

- All lights are supplied with a 3m lead with fitted plug and lamp
- Choice of UK or Euro style plug
- Polypropylene lighting case and Fabric lighting bags available
- Replacement lamps available
- Selection to suit all budgets

Light fitting options

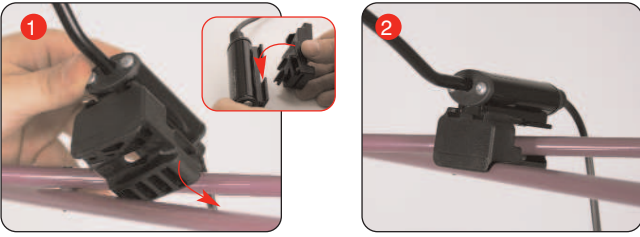
- Universal and Moulded

| Light | Description | Code | Colour | Fitting Options | Usage |
|-----------------|------------------------------|--------|-----------------|--------------------------|--------|
| Powerspot 250 | 50w Low voltage Spotlight | PS250 | Silver | Universal Fitting | Xpress |
| | | | | | Quick |
| | | | | | |
| Powerspot 500 | 50w Low voltage Spotlight | PS500 | Silver | Universal Fitting | Xpress |
| | | | | | Quick |
| | | | | | |
| Powerspot 600 | 50w Low voltage Spotlight | PS600 | Silver | Universal Fitting | Xpress |
| | | | | | Quick |
| | | | | | |
| Powerspot 750 | 50w Low voltage Spotlight | PS750 | Black or Silver | Universal Fitting | Xpress |
| | | | | | Quick |
| | | | | | |
| Powerspot 900 | 150w 240V Halogen Lamp | PS900 | Black | Moulded Fitting | Xpress |
| | | | | | Quick |
| | | | | | |
| Powerspot 950 | 150w 240V Halogen Lamp | PS950 | Black | Quick/Xpress Fitting | Xpress |
| | | | | Spyder | Quick |
| | | | | | |
| Powerspot 1000 | 200w 240v Halogen floodlight | P1000 | Black or Silver | Xpress Moulded Fitting | Xpress |
| | | | | Quick Moulded Fitting | Quick |
| | | | | | |
| Powerspot 1200 | 20w 240V Fluorescent T4 | PS1200 | White Frame | Integral clip | Xpress |
| | | | | | Quick |
| | | | | | |
| LED Flood light | 20w equivalent 240v | | Silver | Quick and xpress fitting | Xpress |
| | | | | | Quick |
| | | | | | |

NB All light fittings are in black unless otherwise stated.

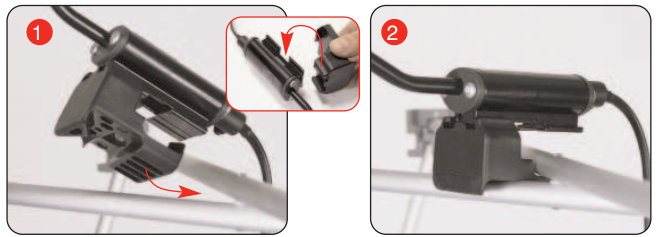
Assembly Instructions

PS900 Quick Pop-up Moulded Fitting



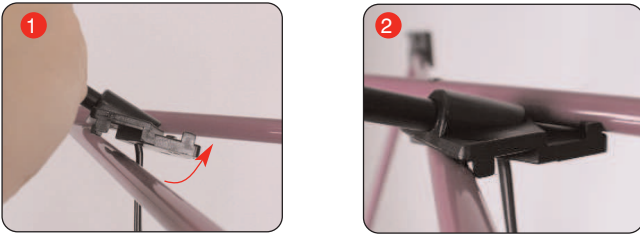
Slide the fitting onto the light. With the front of pop-up frame facing you, place the light fitting where the scissor tubes cross. Insert the fitting between the top tube and the one beneath.

PS900 Xpress Pop-up Moulded Fitting



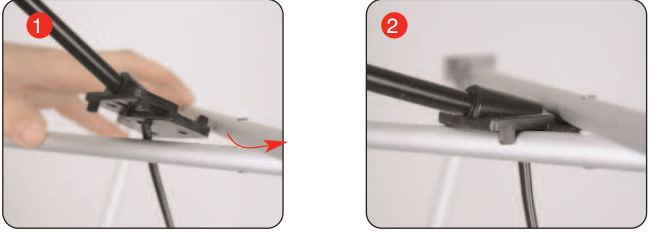
Slide the fitting onto the light. With the front of pop-up frame facing you, place the light fitting where the scissor tubes cross. Insert the fitting between the top tube and the one beneath.

PS950 Quick Pop-up Fitting



With the front of pop-up frame facing you, place the light fitting to the right of where the scissor tubes cross. Insert the fitting between the top tube and the one beneath.

PS950 Xpress Pop-up Fitting



With the front of pop-up frame facing you, place the light fitting to the left of where the scissor tubes cross. Insert the fitting between the top tube and the one beneath.

Pop-Up Universal Fitting



For this you need the pop-up light clip.



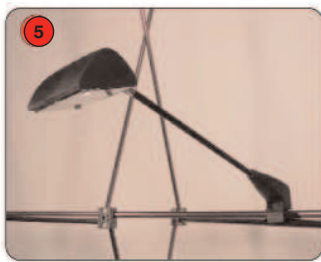
Slide it on with the clip hanging off the back of the light.



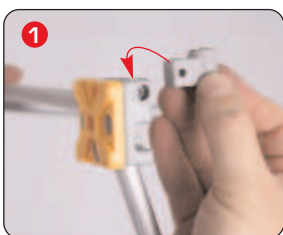
Slide it on the right side between one of the cross sections of the pop-up.



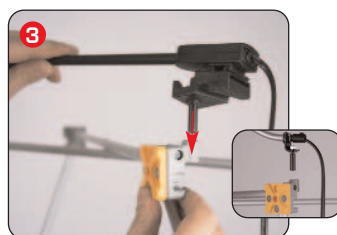
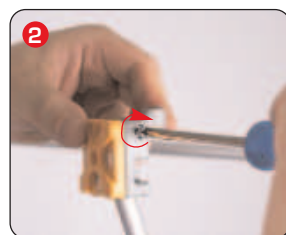
Make sure that it is under the back pole and over the front pole.



Pop-up Node/Tower bracket



Place node fitting into the top node void. Fasten to the pop-up frame using a #6 x 1" screw.



Slide the moulded pole fitting into the node fitting.

